

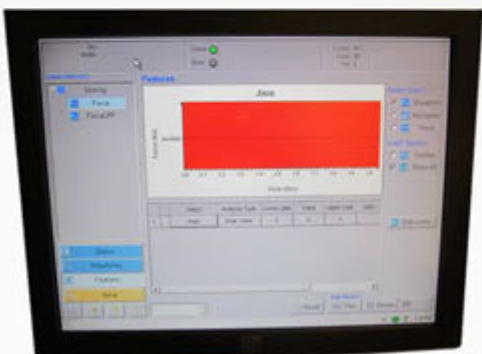
## Custom Solutions for Sterile Packaging Systems



**Mitigating risk in packaging** is a growing concern for medical device manufacturers. Working with an equipment supplier who understands these risks and has the internal resources to investigate suitable options means you get **the right solution** that resolves your specific SOP issues, not a generic off-the-shelf product.

SencorpWhite takes the time to listen to our customers concerns for risk exposure. We discuss solutions in a two-way conversation to ensure that the final solution is in the customer's best interest taking into account appropriate current technologies, clean room floor space or flow hood size restrictions, budget limitations, maintenance requirements, safety issues and ergonomic operator considerations. Proposals can be multi-tiered enabling the customer to select the level of customization that best balances their risk reduction with their budget.

SencorpWhite's custom solutions range from simple sensors for repeatable package placement to full-scale custom machines for highly specialized applications. Our mechanical, electrical and controls engineers have experience configuring machines with bar code scanners, imaging cameras, data acquisition, RFID systems, product detection solutions, package material sensors, package orientation verification and disposition confirmation just to name a few. Contact us today to start a discussion regarding reducing your risks.



# Custom Solutions for Sterile Packaging Systems

400 Kidds Hill Road | Hyannis, MA 02601  
508 771 9400 [www.sencorpwhite.com](http://www.sencorpwhite.com)

## CAPABILITIES

---

140 World-wide employees including:

- 15 Full-time engineers including mechanical, electrical, controls and tooling
- 25 Full-time assemblers including electrical, mechanical and electro-mechanical
- 1 Technical writer for custom documentation
- 11 Full-time machinists including CNC and conventional machinists
- 27 Full-time manufacturing specialists including welders, laser operators, painters, tool makers and quality control technicians
- 4 Full-time project managers
- 18 Full-time service technicians including 15 Field Service Engineers strategically located across the United States
- 13 Full-time administrative or support staff

